



# Outlook

Lunenburg County Historical Society  
Fort Point Museum, PO Box 99, LaHave NS B0R 1C0  
902/688-1632— www.fortpointmuseum.com

VOLUME 42 ISSUE 3  
AUGUST 2011

## WHAT'S HAPPENING AT FORT POINT MUSEUM

**Schools of Yore** — Exhibit can be viewed until the end of our season. Especially if you went to school in the area you'll not want to miss this walk down memory lane.

**Girl Guide Exhibit** — will be up all month and it tells a great story of guiding in the area. Features uniforms of past and present for brownies, guides, guiders, commissioners and many pictures. (See Pg 2)

**August 16** — Monthly meeting & potluck. Special guest presenter, **Bruce Boehner**.—This will be a fascinating piece of history with a great slide presentation! Boehner Bros. Woodworking was around for a long time and was a landmark for many years on the LaHave River in West LaHave. Many houses and businesses in the county feature the excellent craftsmanship of Boehner Bros. One fine example of the buildings they designed is the Fairview Hotel—sadly destroyed by fire just this summer.

*"...Designed by the Boehner Brothers of West LaHave, the present building was constructed in 1916 after a fire destroyed the original hotel. It was known as one of the most popular hostelrys on the South Shore, a viable claim that continues to this day."*

Potluck suppers convene at 6:30 (Bring a dish to share, your plate and cutlery) Presentations begin at 7:30. Members free, non-members welcome, and we appreciate your donation.

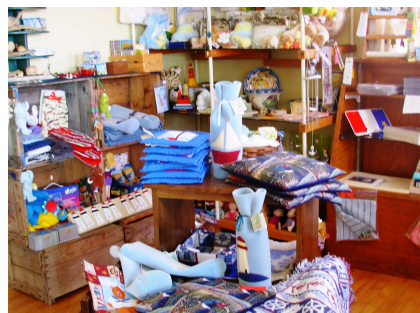
**August 19-20** — **Mi'kmaq Acadian Cultural Festival and Reunion** - (See page 3)

**September 4** — **6th Annual LaHave Folk Festival**—a day of great music plus a songwriters circle and a few surprise guests. (See page 4).

**September 20** — Monthly meeting & Potluck with Special guest **Catherine Pross**. Catherine grew up in Liverpool, NS. After studying English Literature at Mount Allison and Library Science at the University of Toronto, she returned to Nova Scotia and has lived mostly in Indian Path but sometimes in Halifax. She is a past-president of South Shore Naturalists, a member of the LaHave River Watershed Committee, and Chair of the Indian Path Common Land Committee. She is also co-editor, with Sue Kashanski, of the book designed by Jennie Carton, **Indian Path Common: Its Flora, Fauna and History**.



**Museum Gift Shop Open Every Day**



## AND OFF TO SCHOOL WE GO...

Collections Management Committee member **Jan Rofihe** recently attended the first segment of *Museums 101* offered by ANSM. The first segment of this 3 segment program includes *Museums & Community* and *Museums Management & Governance*. The second segment will cover *Public Programming* and *Collections Management & Curatorship*, and the third—*Exhibitions, Facilities Management; and Marketing & Revenue Generating*.

If you haven't visited the museum recently, please do come and see how we look. Every year we try to improve, and the more knowledge we have of "the right way" the better equipped we'll be to make you proud of the way we are preserving, displaying — and teaching — the history of our area.

### Inside this issue:

Girl Guiding in LaHave	2
Meet our Directors	2
Acadian Mi'qmaq Festival	3
ASNM Passage Project	3
LaHave Folk Festival	4
Volunteers	4
Membership	4

## *GIRL GUIDING IN LAHAVE AREA* BY JEAN FRASER MCHARG

From the book *Guiding in Nova Scotia* I learned that Guiding started in LaHave in 1929. **Ada Creaser** assisted by **Nellie Conrad**, **Mrs. George Annand** and, later, **Mrs. Alan (Roberta) Creaser** and **Mrs. Lorin James**, were early leaders. During the early days the Guides held their meetings in the “old” Fire Hall opposite the present ferry terminal. They went on hikes and each summer camped on Miller property up the river.

The following ladies assisted me in identifying a number of girls who were those early Guides: **Marguerite Voglein**, **Yvonne Haughn**, **Barbara Hayward**, **Monica Pentz** and **Marguerite Wall**.

**Joan Zinck McLaughlin** told me about **Greta Himmelman** telling her that she was going to start a Guide Company in the early 1950s because girls had little activity in LaHave at that time. This was time of lots of camps. The Guides camped with other Lunenburg county companies at Mush a Mush and in Petite Riviere. **Masie Richards**, **Beryl Balcom**, **Shirley Damery**, **Ruth Seamone**, **Susan Lohnes**, **Johanna Rafuse** and **Barbara Rafuse** were helpful in indentifying girls in pictures and supplying a number of the pictures and items on display.

I am indebted to Ruth (Himmelman) Seamone for loaning many artifacts belonging to her mother Greta, and to Joan (Zinck) McLaughlin for sending her scrapbook to me.

It is evident that a number of the girls who were the first Guides went on to be the later leaders in Guides and Brownies in LaHave. Some, like Marguerite Wall, left LaHave but continued in Guiding in other provinces. Joan Zinck was, for some time, a Guider in Halifax. Most of these ladies became leaders in community organizations, a testament to the leadership skills they developed through Guiding.

### *Meet Board Member and LCHS Treasurer—Martha Saunders Bryson*



Born about 71 years ago in Montreal, Martha moved to the Maritimes (specifically Saint John, New Brunswick) at age 11 and has been a Maritimer ever since, living in Rothesay, Moncton, Fredericton and Dartmouth before moving to the LaHave River in 2000. Martha and her husband John lived in West LaHave at first, and, wanting to become involved in the community as respectable CFA's, joined the Lunenburg County Historical Society and have been regular volunteers for 11 years.

After graduating from the University of New Brunswick with a degree in Physical Education, Martha decided to pursue a financial management career instead and, after staying home with the children, worked in Fredericton in that capacity until Nova Scotia beckoned.

Martha and John have a business called *Safe Home Security* ([www.safehomesecurityns.com](http://www.safehomesecurityns.com)) which installs residential and commercial security systems monitored by Reliance Protectron. Besides handling the financial end of that business, Martha is the manager and the instructor trainer of Elderfit ([www.elderfitlunenburg.ca](http://www.elderfitlunenburg.ca)), a water exercise program aimed at seniors which operates classes in Lunenburg County and serves approximately 175 people.

Martha and John now live in East LaHave. When they have time they like to canoe. They don't do much canoeing. They have 3 sons and 2 grandchildren.

# *MI'KMAQ ACADIAN CULTURAL FESTIVAL*

## *AUGUST 19 & 20*



The festival starts on Friday with a typical Louisiana meal of mussels, chicken gumbo and a blueberry dessert. Our dinner will be prepared by visiting Louisiana Chef, Keith Doucet.

Music will be provided by Bernie David and Christine & Lee Ann Law from Louisiana. There are two seatings—5 and 6:30 p.m. Tickets are \$15.00 and are available at the **Fort Point Museum at 688-1632**, or by contacting **Hank Middleton at 543-2349**, or **Ellen Hunt at 634-8017**. (Reservations recommended!) The dinner will be followed at 8 pm. by Mi'kmaq teachings and the Sacred Fire.

**(Registration for Saturday's 10 am Canoe races at Getson's Cove will take place at 6 p.m. Friday evening at the Fort Point Museum.)**

The annual Sunrise Ceremony will be held at Sperry's Beach Burial Grounds on Saturday morning at 9 am, and the

Festival official opening at will be at 11:30 at Fort Point, followed by a reenactment of the first mussel bake. Afternoon entertainment will begin at 12:30 and will feature Acadian and Louisiana performers including Darren Arsenault, Collage, Yves Rossignol, Bernie David, the Law Family, Kaylyn Turner—as well as Mi'kmaq drummers and dancers. Various cultural workshops and demonstrations will also take place during Saturday afternoon. The entertainment and workshops are free to the public. This year we are also including some German culture and food as the Germans settlers made a huge impact not only in Lunenburg, but in our immediate area as well. There will be vendors on site and food concessions provided by the LCHS members. At 5 p.m. we will have our annual Feast, which will include a variety of Acadian and German dishes, as well as samples of wild game which provided nourishment to the Mi'kmaq people.

The public is invited to the feast and asked to make a donation to support next year's festival. Such a variety of food you will never see (until next year)! Following the feast and the traditional "Give Away" ceremony, there will be a typical Acadian Kitchen Party with music by members of Collage and visiting musicians from Louisiana. This will take place between 8 p.m. and 10 p.m.

### *Association of NS Museums Passage Project*

Since May 2009 LCHS has been part of the *Passage Project*, a grass roots project initiated in 2002 by the ANSM to develop a common information management tool and provide computer training and IT support to community museums. The project has steadily grown as more museums have realized the benefits and economy of co-operative work.

In 2006 Passage began partnering with the Canadian Heritage Information Network (CHIN) on Collections Development Projects. Currently, Passage member museums collectively have over 125,000 records which are being uploaded to Artifacts Canada in order to increase public awareness of museums and their communities.

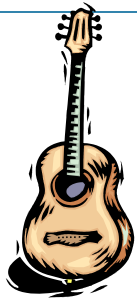
A steering committee for the *Passage Project*, which includes representatives from each of the heritage regions, oversees the project activities and we receive on-site visits to help us understand upgrades etc.

The has been, and continues to be, a monumental project for LCHS. We have found that many of our artifacts have never been accessioned, and for many that have, we didn't have a complete provenance.

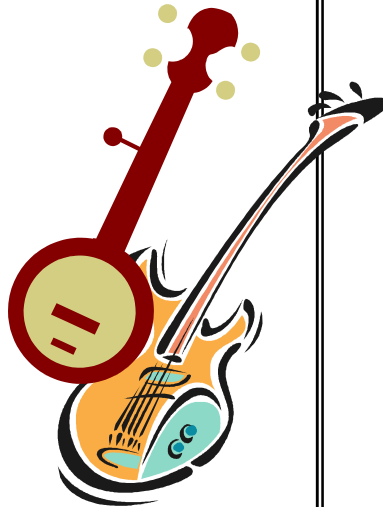
**Mary Black** has done a large amount of data input for us, and **Jan Sundin** has photographed the items in our collection—and we owe them both a great thank you! Our student staff in the past 3 summers have also been a great help on the project.

One exciting aspect of the Passage Project is that we can now locate our artifacts! Following the new construction when everything was "farmed out" for storage it has been a monumental task for the Collections Management Committee to actually know what we had and where it was at the moment. We will have more special exhibits as we continue to discover just what we have in our collection.

The 6th annual  
**LAHAVE FOLK FESTIVAL**



THE HUPMAN BROTHERS  
KICKIN MULE BLUES BAND  
BOB ARDERN  
RYAN COOK  
JAMIE JUNGER  
ANDY & ARIANA  
HEATHER KELDAY  
DARREN ARSENAULT TRIO  
WEATHER ADVISORY  
COLLAGE  
SONG WRITERS CIRCLE  
LUCAS REEVES  
JANICE CONELIUS  
TARYN FUDGE  
SETH COLE



September 4th 1 pm to 9 pm  
FORT POINT MUSEUM  
LaHave  
Tickets 20.00 per person 50.00 family  
\$15 & \$40 advance - call 688-1970

**LCHS Board of Directors**

**Executive Committee**

**President**—Donna Malone  
**Vice President** – Johanna Rafuse  
**Secretary**—Allison Weagle  
**Treasurer**—Martha Saunders  
**Past President**—Gary Malone

**Directors**

Ellen Hunt  
Doris Wentzell  
Valerie Angell  
Kathy Sullivan  
Dick Joyce  
George Himmelman  
Hank Middleton  
Steve Smith  
Jim Sewell  
David Cook

**Committee Chairs**

**Gardens** —Marina Fregeau  
**Collections Management**—Doris Wentzell  
**Razilly's Brigadiers**—Gary Malone  
**Ways & Means**—David Cook  
**Outlook Editor**—Mary Fulleman



**Webster's defines "volunteer" as "a person who enters or offers to enter into any service of his own free will..."**

We have two big events taking place in the next month! Volunteers are needed to help with parking, bake sweets, make sandwiches, help with barbecuing, man the food tables at the events, and meet & greet & take the money at the admission gate. And lastly, help with clean up. The **Mi'kmaq Acadian Festival and Reunion August 19-20** and the **LaHave Folk Festival September 4** are great events, and in order for them to be a success we need your support. Please contact **Johanna Rafuse at 523 2697** to volunteer.

**MEMBERSHIP IN LUNENBURG COUNTY HISTORICAL SOCIETY**

We value you as a member and your membership helps us sustain the Fort Point Museum. Return this portion with your dues. Make your cheque payable to **LCHS and mail to PO Box 99, LaHave NS B0R 1C0**. Contributions are tax deductible in the amount allowed by law. A receipt will be sent upon request.

Name \_\_\_\_\_ Phone \_\_\_\_\_

Address \_\_\_\_\_ Email \_\_\_\_\_

City/Town \_\_\_\_\_ Prov \_\_\_\_\_ Postal Code \_\_\_\_\_

- Individual \$10 \_\_\_\_\_
- Family \$20 \_\_\_\_\_
- Business \$30 \_\_\_\_\_
- Special Contribution \_\_\_\_\_
- Total Enclosed** \_\_\_\_\_

**Please allocate this special contribution to:**

- Grounds/Garden  Building Maintenance/Improvement
- Special Exhibits & Programs  Acadian—Mi'kmaq
- General Operating Expense